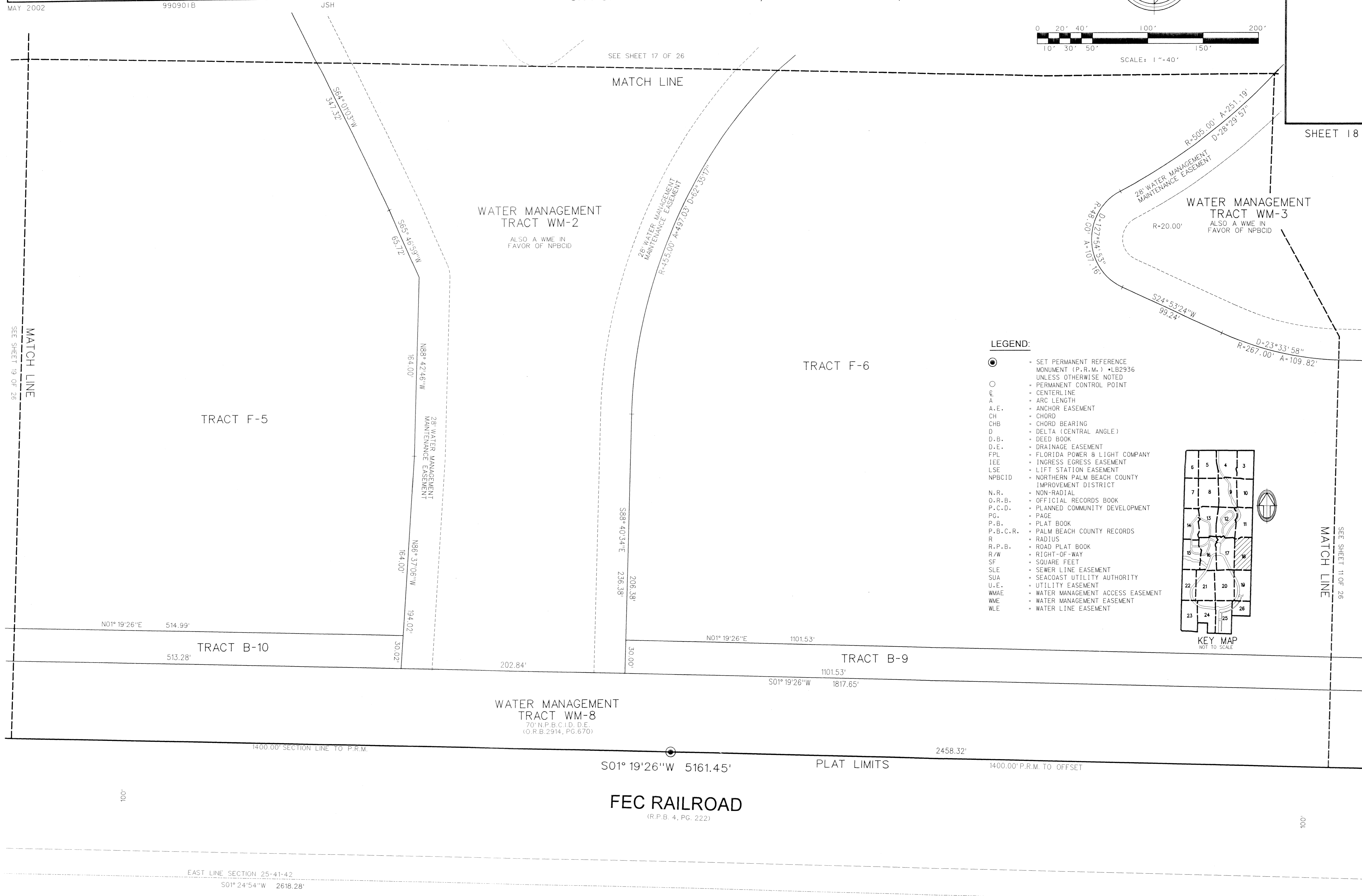
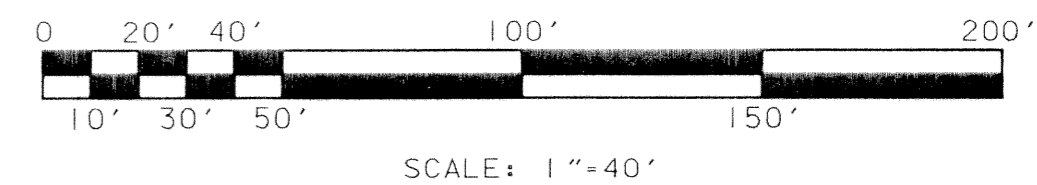
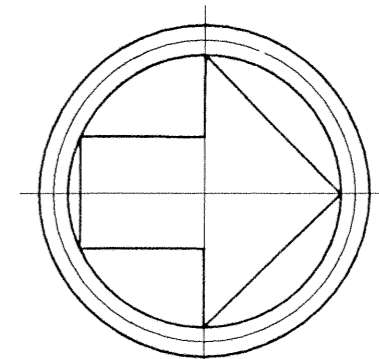


CARNAHAN · PROCTOR · CROSS, INC.
 CONSULTING ENGINEERS · SURVEYORS · PLANNERS
 6101 WEST ATLANTIC BOULEVARD, MARGATE, FLORIDA 33063
 PHONE: 954-972-3959 FAX: 954-972-4178

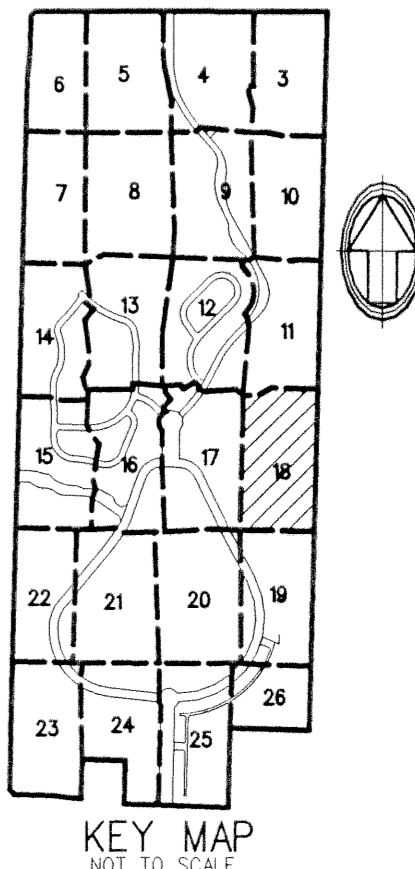
EVERGRENE PLAT TWO

A REPLAT OF A PORTION OF TRACT "A", "EVERGRENE" (P.B. 93, PGS. 117-119, P.B.C.R.)
 CITY OF PALM BEACH GARDENS, PALM BEACH COUNTY, FLORIDA



LEGEND:

- - SET PERMANENT REFERENCE MONUMENT (P.R.M.) *LB2936 UNLESS OTHERWISE NOTED
- - PERMANENT CONTROL POINT
- ℄ - CENTERLINE
- A - ARC LENGTH
- A.E. - ANCHOR EASEMENT
- CH - CHORD
- CHB - CHORD BEARING
- D - DELTA (CENTRAL ANGLE)
- D.B. - DEED BOOK
- D.E. - DRAINAGE EASEMENT
- FPL - FLORIDA POWER & LIGHT COMPANY
- IEE - INGRESS EGRESS EASEMENT
- LSE - LIFT STATION EASEMENT
- NPBCID - NORTHERN PALM BEACH COUNTY IMPROVEMENT DISTRICT
- N.R. - NON-RADIAL
- O.R.B. - OFFICIAL RECORDS BOOK
- P.C.D. - PLANNED COMMUNITY DEVELOPMENT
- PG. - PAGE
- P.B. - PLAT BOOK
- P.B.C.R. - PALM BEACH COUNTY RECORDS
- R - RADIUS
- R.P.B. - ROAD PLAT BOOK
- R/W - RIGHT-OF-WAY
- SF - SQUARE FEET
- SLE - SEWER LINE EASEMENT
- SUA - SEACOAST UTILITY AUTHORITY
- U.E. - UTILITY EASEMENT
- WMAE - WATER MANAGEMENT ACCESS EASEMENT
- WME - WATER MANAGEMENT EASEMENT
- WLE - WATER LINE EASEMENT



SHEET 18 OF 26

SEE SHEET 11 OF 26

MAY 2002

990901B

JSH

SEE SHEET 17 OF 26

MATCH LINE

WATER MANAGEMENT TRACT WM-2
 ALSO A WME IN FAVOR OF NPBCID

TRACT F-6

TRACT F-5

N01° 19' 26" E 514.99'

TRACT B-10
 513.28'

WATER MANAGEMENT TRACT WM-8
 70' N.P.B.C.I.D. D.E.
 (O.R.B. 2914, PG. 670)

TRACT B-9

N01° 19' 26" E 1101.53'

S01° 19' 26" W 1817.65'

WATER MANAGEMENT TRACT WM-8
 70' N.P.B.C.I.D. D.E.
 (O.R.B. 2914, PG. 670)

S01° 19' 26" W 5161.45'

PLAT LIMITS

2458.32'

1400.00' P.R.M. TO OFFSET

FEC RAILROAD
 (R.P.B. 4, PG. 222)

EAST LINE SECTION 25-41-42
 S01° 24' 54" W 2618.28'

FILE: I:\990901\cadd\25-41-42\2pp18.dgn
 DATE: 16-May-02 16:25